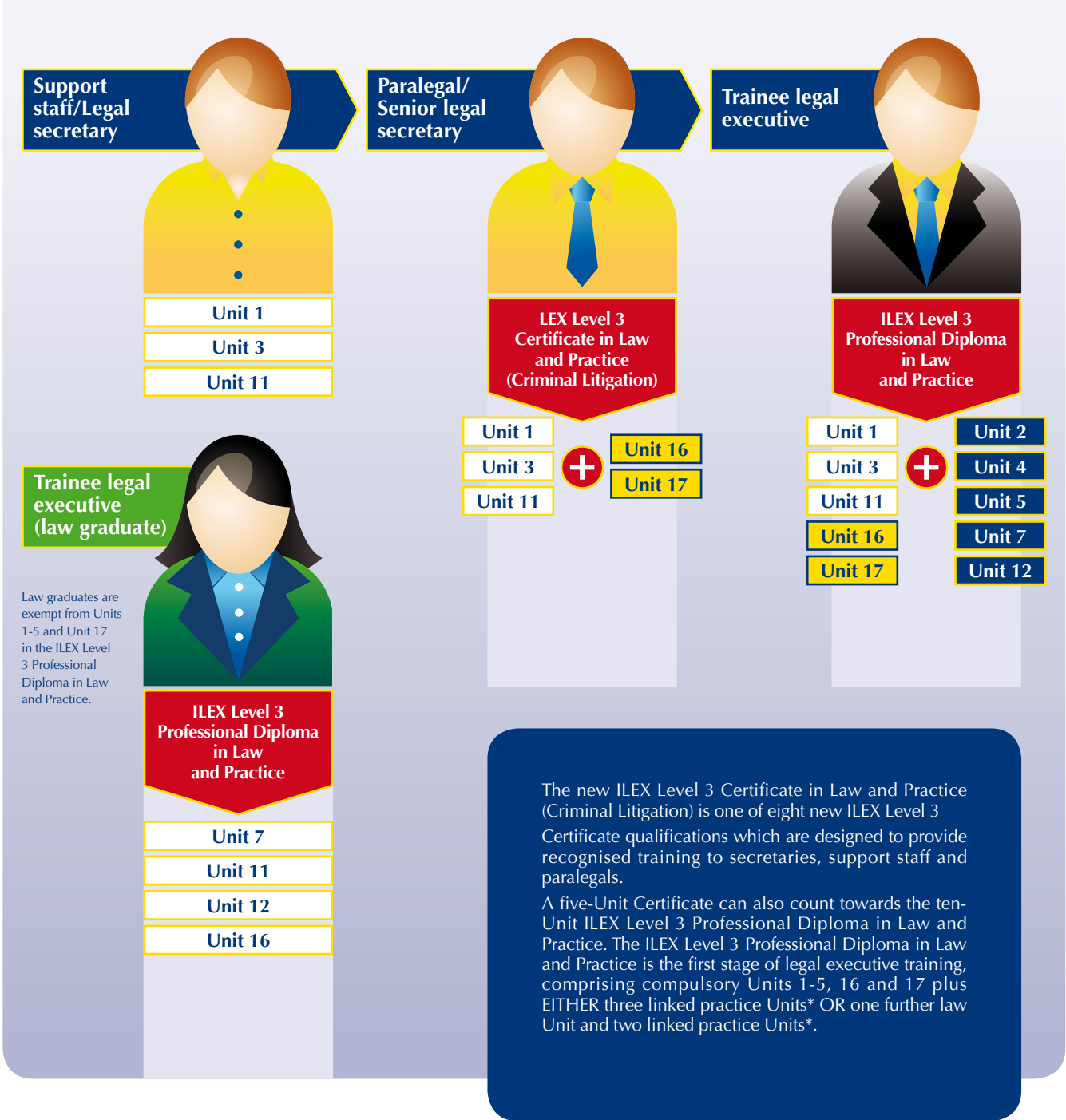


The new ILEX Level 3 qualifications –

designed to fit your staff's training needs

Criminal Litigation Department



*The red number after the law Units in the list below indicates the linked practice Unit(s).

Unit 1 Introduction to Law and Practice, **Unit 2** Contract Law (9), **Unit 3** Criminal Law (11), **Unit 4** Land Law (10), **Unit 5** Law of Tort (9), **Unit 6** Employment Law (13), **Unit 7** Family Law (12), **Unit 8** Law of Wills and Succession (14 and/or 15), **Unit 9** Civil Litigation, **Unit 10** Conveyancing, **Unit 11** Criminal Litigation, **Unit 12** The Practice of Family Law, **Unit 13** The Practice of Employment Law, **Unit 14** Probate Practice, **Unit 15** The Practice of Law for the Elderly Client, **Unit 16** Client Care Skills, **Unit 17** Legal Research Skills.

To find out how our ILEX Level 3 courses can help your firm please call Jenny Pelling on 01234 844326